

Session Name: Current Session

Date Created: 3/8/2022 6:05:58 PM

Active Participants: 10 of 10

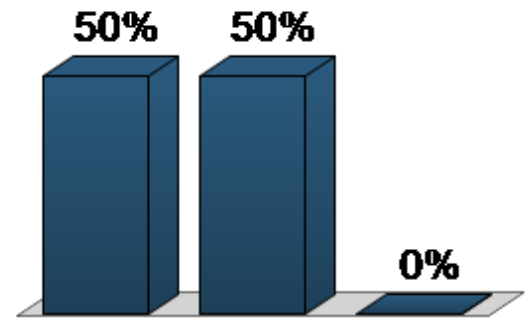
Average Score: 0.00%

Questions: 21

Results by Question

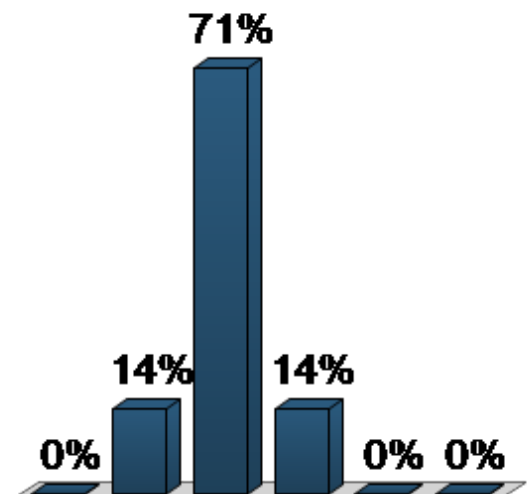
1. Gender (Multiple Choice)

Responses		
	Percent	Count
Female	50%	4
Male	50%	4
No Response	0%	0
Totals	100%	8



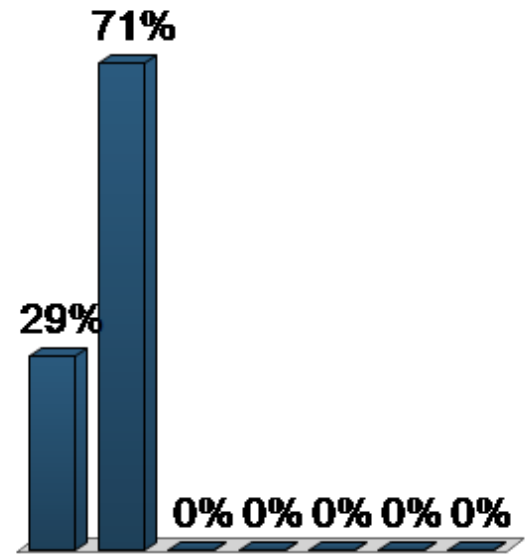
2. What is your age? (Multiple Choice)

Responses		
	Percent	Count
19 & Under	0%	0
20 – 34	14.29%	1
35 – 49	71.43%	5
50 – 64	14.29%	1
65 & Over	0%	0
No Response	0%	0
Totals	100%	7



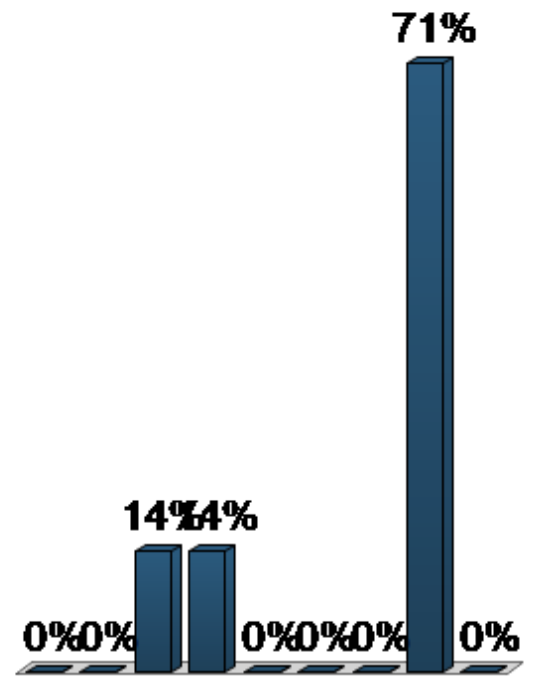
3. What is your race/ethnicity? (Multiple Choice)

	Responses	
	Percent	Count
White or European American	28.57%	2
Black or African American	71.43%	5
Hispanic or Latino	0%	0
Asian	0%	0
Native Hawaiian/Other Pacific Islander	0%	0
Two or more races	0%	0
Another race not listed	0%	0
Totals	100%	7



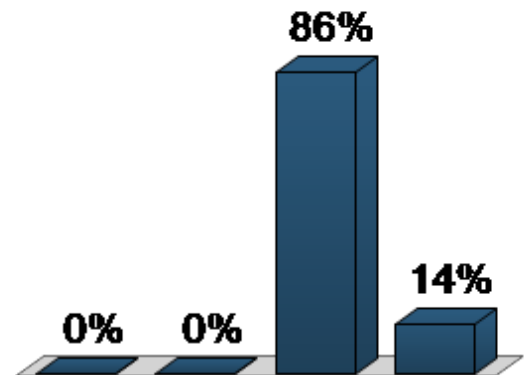
4. What is your zip code? (Multiple Choice)

Responses		
	Percent	Count
23605	0%	0
23651	0%	0
23661	14.29%	1
23663	14.29%	1
23664	0%	0
23665	0%	0
23666	0%	0
23669	71.43%	5
Outside Hampton/not listed	0%	0
Totals	100%	7



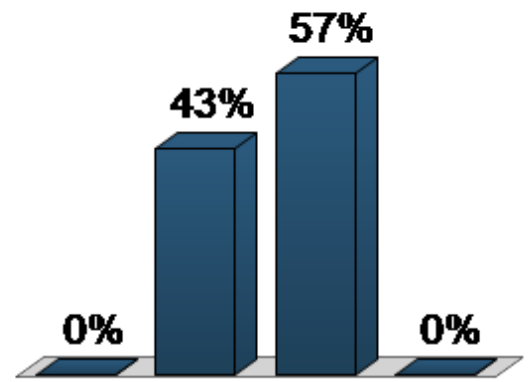
5. Competitive Wage Increases – Preference (Multiple Choice)

Responses		
	Percent	Count
3%	0%	0
4%	0%	0
5%	85.71%	6
6%	14.29%	1
Totals	100%	7



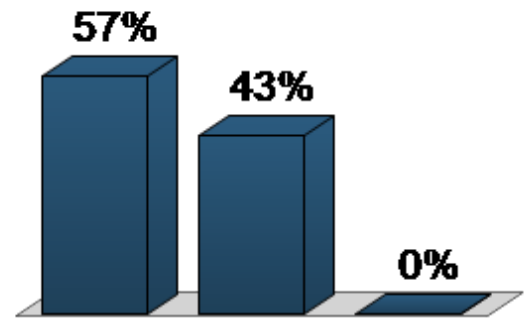
6. Minimum Wage Amount – Preference (Multiple Choice)

	Responses	
	Percent	Count
\$12.00/hr	0%	0
\$13.00/hr	42.86%	3
\$15.00/hr	57.14%	4
\$16.33/hr	0%	0
Totals	100%	7



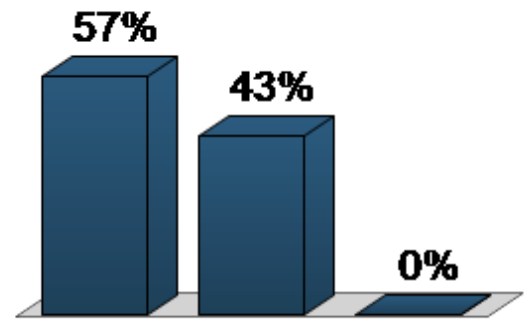
7. Public Safety Range Adjustments (Multiple Choice)

	Responses	
	Percent	Count
Tier 1	57.14%	4
Tier 2	42.86%	3
Tier 3	0%	0
Totals	100%	7



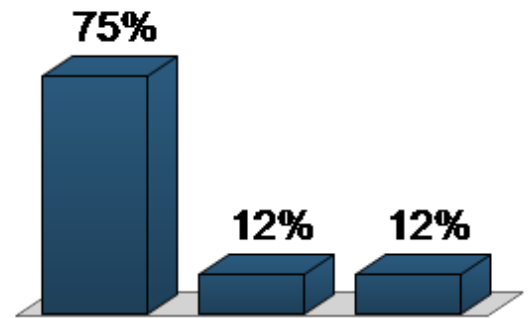
8. Civilian Targeted Range Adjustments (Multiple Choice)

Responses		
	Percent	Count
Tier 1	57.14%	4
Tier 2	42.86%	3
Tier 3	0%	0
Totals	100%	7



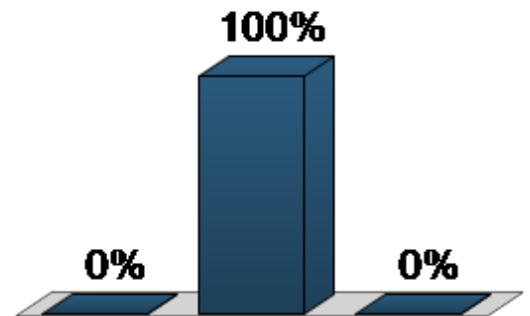
9. Eliminate Fees for Online Payments (Multiple Choice)

Responses		
	Percent	Count
Tier 1	75%	6
Tier 2	12.5%	1
Tier 3	12.5%	1
Totals	100%	8



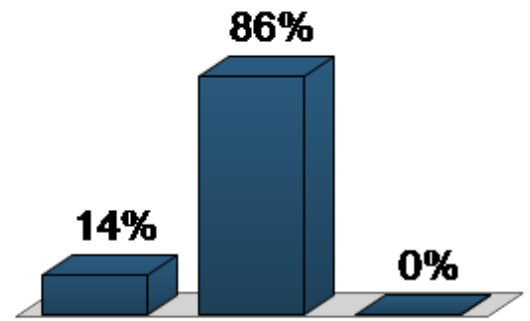
10. New Staffing Recommendation (Multiple Choice)

Responses		
	Percent	Count
Tier 1	0%	0
Tier 2	100%	5
Tier 3	0%	0
Totals	100%	5



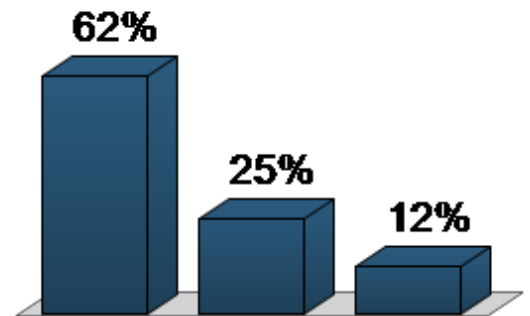
11. New Staffing Recommendation (Multiple Choice)

	Responses	
	Percent	Count
Tier 1	14.29%	1
Tier 2	85.71%	6
Tier 3	0%	0
Totals	100%	7



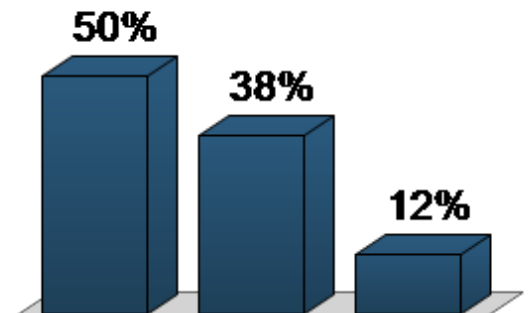
12. Parks Maintenance (Multiple Choice)

	Responses	
	Percent	Count
Tier 1	62.5%	5
Tier 2	25%	2
Tier 3	12.5%	1
Totals	100%	8



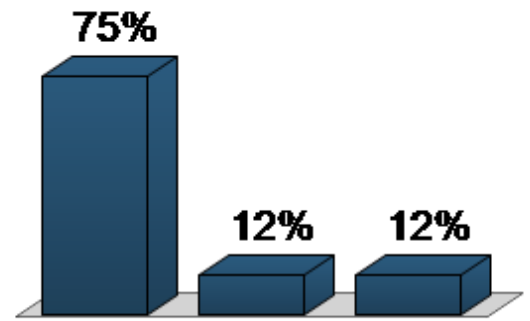
13. Special Events (Multiple Choice)

	Responses	
	Percent	Count
Tier 1	50%	4
Tier 2	37.5%	3
Tier 3	12.5%	1
Totals	100%	8



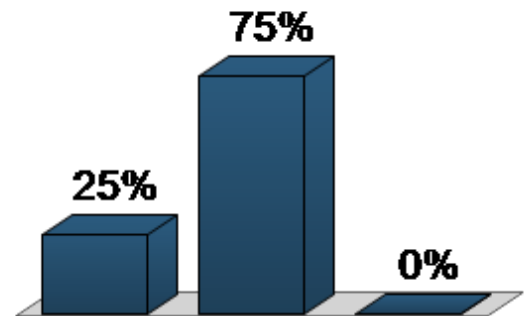
14. School Grounds Maintenance (Multiple Choice)

Responses		
	Percent	Count
Tier 1	75%	6
Tier 2	12.5%	1
Tier 3	12.5%	1
Totals	100%	8



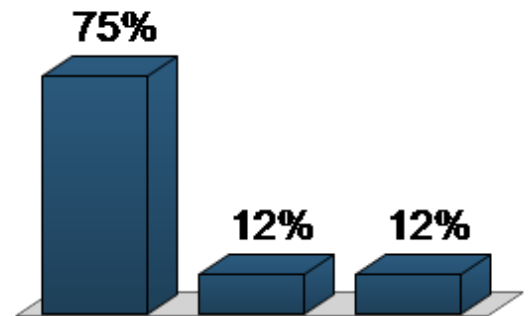
15. Enhanced Right-of-Way Maintenance (Multiple Choice)

Responses		
	Percent	Count
Tier 1	25%	2
Tier 2	75%	6
Tier 3	0%	0
Totals	100%	8



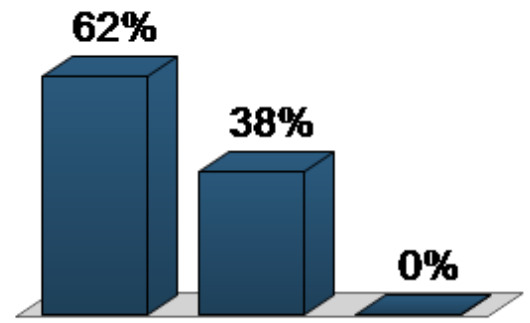
16. Youth Summer Employment Expansion (Multiple Choice)

Responses		
	Percent	Count
Tier 1	75%	6
Tier 2	12.5%	1
Tier 3	12.5%	1
Totals	100%	8



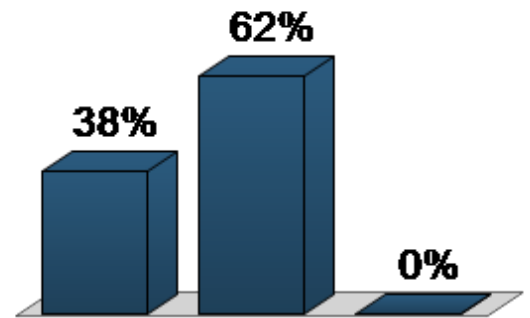
17. EMS Personnel (Multiple Choice)

Responses		
	Percent	Count
Tier 1	62.5%	5
Tier 2	37.5%	3
Tier 3	0%	0
Totals	100%	8



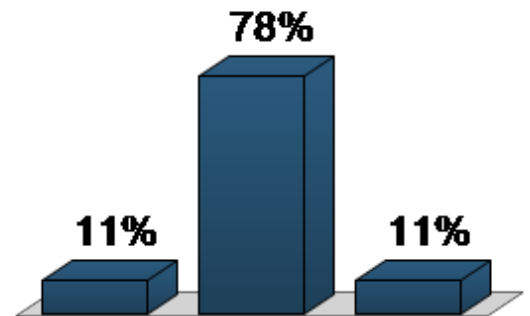
18. Enhanced Take Home Car Program (Multiple Choice)

Responses		
	Percent	Count
Tier 1	37.5%	3
Tier 2	62.5%	5
Tier 3	0%	0
Totals	100%	8



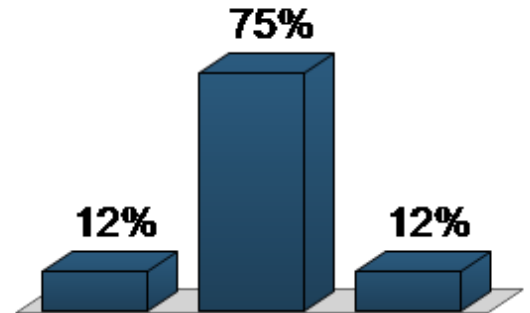
19. Enhanced Code Enforcement (Multiple Choice)

Responses		
	Percent	Count
Tier 1	11.11%	1
Tier 2	77.78%	7
Tier 3	11.11%	1
Totals	100%	9



20. Real Estate Tax Relief Options (Multiple Choice)

	Responses	
	Percent	Count
\$1.19 equalized rate	12.5%	1
Somewhat higher rate to add investments	75%	6
I prefer a rate less than \$1.19, even though a lower rate means cuts in service	12.5%	1
Totals	100%	8



21. Tax Relief: Grocery Sales Tax (Multiple Choice)

	Responses	
	Percent	Count
Keep	80%	4
Remove and increase real estate tax	0%	0
Remove and significantly decrease services	20%	1
Totals	100%	5

